

Year-Round Pell

PELL GRANT

“Two is Better than One”

David Bartnicki
404-974-9312; david.bartnicki@ed.gov

- Terms:
 - Year-Round Pell
 - 2 Pell Grants in an Award Year
- Definition:
 - *Possible* for a student to receive up to two full Scheduled Pell Awards within one Award Year

2

Pell Grant

Award Year

- The award year is July 1 of one year to June 30 of the following year
 - Example: July 1, 2009 to June 30, 2010
 - Defines the timeframe in which students may receive the maximum amount of Pell funds for a given period
 - Pell Grant amounts are established each award year by Congress
 - Maximum amounts may change each award

3

Scheduled Award

- The Scheduled Award is the maximum amount the student can receive during the award year, if he or she attends *full-time for a full academic year*.
- Established by the Pell Grant payment schedule that the Department issues prior to the start of each award year
- Scheduled Award is always taken from the Full-Time payment schedule, and is based on the student's EFC and COA

4

Annual Award

- The maximum amount a student would receive during a full academic year for a given enrollment status, EFC, and COA.
- The annual award for a student in a *clock-hour/nonterm credit* program is taken from the full-time payment schedule, even if the student is attending less than full-time.
 - Therefore, the annual award will always equal the scheduled award

5

Year-Round Pell Grant

- **Effective with the 2009-2010 award year**
- **If receiving two scheduled Pell Grant awards during the same award year**
 - Use the same EFC for both Awards
 - May receive up to two FULL scheduled awards
 - Max Pell for 09/10 award year is \$5,350

6

Year-Round Pell

Year-Round Pell Grant

- Schools will continue to calculate the payment using scheduled award for award year (using annual award as appropriate)
 - Continue to use normal Pell formulas (1, 2...)
 - Determining disbursements and payment periods are the same for both award amounts
- Schools will be able to pay a student up to a maximum of 200% of the scheduled award for the award year

7

Student Eligibility – 09/10 Award Year

- For receipt of the first scheduled award, student may be at any enrollment status
- For receipt of money from the **second** scheduled award, student must be enrolled **at least half-time**

Funds from 2nd scheduled Pell not accessed until 1st scheduled Pell completely used

8

EXAMPLES 2009-2010

9

Year-Round Pell Summer 2009 Implementation

Effective 7/1/2009

Summer payment period often a *Crossover period*

- Payment period that overlaps June 30/July 1
 - Any term
 - semester, quarter, trimester, nonstandard term
 - Any other payment period
 - ½ academic year in clock hour program
 - ½ academic year in credit non-term program

10

Crossover Payment Periods

- Cross-over payment periods must be assigned to one award year
 - School may assign to either award year – with valid ISIR
- Use same EFC, COA and need for all programs except Pell
 - Pell - use EFC for award year paid from
- Example: Summer 2009 trailer but school pays summer Pell from 09-10 ISIR
 - Use 2009-10 ISIR/EFC for Pell
 - Use 2008-09 ISIR/EFC for packaging all other aid

11

Year-Round Pell Summer 2009 Implementation

If Summer 2009 is crossover term:

- Use 2008-2009 funds
 - Pay using student's remaining 08/09 scheduled award
 - OR
 - Not pay because student has no 08/09 scheduled award remaining
 - OR
- Use 2009-2010 funds
 - Pay using student's 09/10 scheduled award

12

Year-Round Pell

Year-Round Pell Summer 09 Semester Example

- Standard term semester calendar
 - Two term academic year – fall and spring
 - Optional summer semester is a cross-over term
- Assume
 - 0 EFC
 - High COA
 - Student's first enrollment is fall 2008

13

Year-Round Pell Summer 09 Semester Example

Example Of Summer Semester As Trailer

Fall 2008 \$2,366	Spring 2009 \$2,365	Summer 2009 \$0.00	100% 2008-09 AY \$4,731
2008-09 Award Year			
Fall 2009 \$2,675	Spring 2010 \$2,675	Summer 2010 \$2,675	150% 2009-10 AY \$8,025
2009-10 Award Year			

14

Year-Round Pell Summer 09 Semester Example

Example Of Summer Semester As Header

Summer 2008 Not enrolled	Fall 2008 \$2,366	Spring 2009 \$2,365	100% 2008-09 AY \$4,731
2008-09 Award Year			
Summer 2009 \$2,675	Fall 2009 \$2,675	Spring 2010 \$2,675	150% 2009-10 AY \$8,025
2009-10 Award Year			

15

Year-Round Pell Summer Semester As Header & Trailer

Fall 2008 \$2,366	Spring 2009 \$2,365	100% 2008-09 AY \$4731	
2008-09 Award Year			
Summer 2009 \$2,675	Fall 2009 \$2,675	Spring 2010 \$2,675	Summer 2010 \$2,675
2009-10 Award Year			
200% 2009-10 AY \$10,700			

16

Year-Round Pell Single Term Paid From 1st & 2nd Scheduled Award

Completes first scheduled award and begins second scheduled award within same term

2009-10 Scheduled Award = \$5,350

HT Summer 2009 \$1,338 25% (used)	FT Fall 2009 \$2,675 75% (total used)	TQT Spring 2010 \$2,007 \$1,337 + \$670 100% + 12.5%	112.5% 2009-10 AY \$6,020
--	---	--	---------------------------------

Usage of 2009-10 AYPell Scheduled Awards

17

Year-Round Pell Summer 09 Quarter Example

- Standard term quarter calendar
 - Three term academic year - fall, winter, spring
 - Optional summer quarter is a cross-over term
- Assume
 - 0 EFC
 - High COA
 - Student's first enrollment is fall 2008

18

Year-Round Pell

Year-Round Pell Summer 09 Quarter Example

Example Of Summer Quarter As Trailer

Fall 2008 \$1,577	Winter 2009 \$1,577	Spring 2009 \$1,577	Summer 2009 \$0.00	100% 2008-09 AY \$4,731
2008-09 Award Year				

Fall 2009 \$1,784	Winter 2010 \$1,783	Spring 2010 \$1,783	Summer 2010 \$1,784	133.3% 2009-10 AY \$7,134
2009-10 Award Year				

19

Year-Round Pell Summer 09 Quarter Example

Example Of Summer Quarter As Header

Summer 2008 Not enrolled	Fall 2008 \$1,577	Winter 2009 \$1,577	Spring 2009 \$1,577	100% 2008-2009 AY \$4,731
2008-09 Award Year				

Summer 2009 \$1,784	Fall 2009 \$1,783	Winter 2010 \$1,783	Spring 2010 \$1,784	133.3% 2009-2010 AY \$7,134
2009-10 Award Year				

20

Year-Round Pell Summer As Header & Trailer

Fall 2008 \$1,577	Winter 2009 \$1,577	Spring 2009 \$1,577	100% 2008-2009 AY \$4,731
2008-09 Award Year			

Summer 2009 \$1,784	Fall 2009 \$1,783	Winter 2010 \$1,783	Spring 2010 \$1,784	Summer 2010 \$1,783
2009-10 Award Year				

166.6% 2009-2010 AY \$8,917

21

Year-Round Pell Single Term Paid From 1st & 2nd Scheduled Award

Completes first scheduled award and begins second scheduled award within same term

2009-10 Scheduled Award = \$5,350

Half-time Summer 2009 \$892 (16.6% used)	Full-time Fall 2009 \$1,784 (50% total used)	Full-time Winter 2010 \$1,783 (83% total used)	TQT Spring 2010 \$1338 ((\$892+\$446) (100% + 8% used)	108% 2009-10 AY \$5,797
---	--	--	--	-------------------------------

Usage of 2009-10 AY Pell Scheduled Awards

22

Year-Round Pell Clock Hour Example

- School has program consisting of 1500 clock hours to be completed over 42 weeks
- School defines its academic year as 900 clock hours and 26 weeks
- School has monthly starts
- Student is enrolled full-time and is eligible for a maximum Pell of \$4,731 for 08-09 and \$5,350 for 09-10.

☆ HEOA makes no change to payment period determinations

23

Clock Hour Calculation – Example 1

Current Rule - No Cross-over Payment Period

Student begins in July 2008

Program ends April 2009

(Jul/Sep 2008) 450 hours/13 weeks \$2,366	(Oct/Dec 2008) 450 hours/13 weeks \$2,365	100% 2008-09 AY \$4,731
2008-09 Award Year		

(Jan/Feb 2009) 300 hours/8 weeks \$0.00	(Mar/Apr 2009) 300 hours/8weeks \$0.00	No eligibility remaining in 2008-09 AY
2008-09 Award Year		

24

Year-Round Pell

Clock Hour Calculation – Example 2

New Rule - No Cross-over Payment Period
 Student begins in July 2009
 Program ends in April 2010

(Jul/Sep) 450 hours/13 weeks \$2,675	(Oct/Dec) 450 hours/13 weeks \$2,675
2009-10 Award Year	

161.5%
2009-10 AY
\$8,642

(Jan/Feb) 300 hours/8 weeks \$1,646	(Mar/Apr) 300 hours/8 weeks \$1,646
2009-10 Award Year	

25

Maximum Pell amounts & COD Processing

Maximum Duration of Eligibility

- Limits Pell eligibility to 18 semesters
 - Department equivalent is 9 scheduled awards
 - 900% of life-time Pell eligibility
- Applies only to students who are first-time Pell recipients in the 2008-2009 award year or after
 - Students enrolled less than full-time will be assessed at the fractional enrollment status

27

Maximum Duration of Eligibility

Student's Pell disbursements based on enrollment status per payment period	Percentage Used				
2008-09* <table border="1"><tr><td>Fall 2008 FT</td><td>Spring 2009 FT</td></tr></table>	Fall 2008 FT	Spring 2009 FT	= 100%		
Fall 2008 FT	Spring 2009 FT				
2009-10 <table border="1"><tr><td>Fall 2009 TQT</td><td>Spring 2010 TQT</td><td>Summer 2010 TQT</td></tr></table>	Fall 2009 TQT	Spring 2010 TQT	Summer 2010 TQT	= 112.5%	
Fall 2009 TQT	Spring 2010 TQT	Summer 2010 TQT			
2010-11 <table border="1"><tr><td>Fall 2010 HT</td><td>Summer 2011 HT</td><td>Fall 2011 HT</td></tr></table>	Fall 2010 HT	Summer 2011 HT	Fall 2011 HT	= 75%	
Fall 2010 HT	Summer 2011 HT	Fall 2011 HT			
2014-15 <table border="1"><tr><td>Summer 2014 FT</td><td>Fall 2014 FT</td><td>Spring 2015 FT</td><td>Summer 2015 FT</td></tr></table>	Summer 2014 FT	Fall 2014 FT	Spring 2015 FT	Summer 2015 FT	= 200%
Summer 2014 FT	Fall 2014 FT	Spring 2015 FT	Summer 2015 FT		
2015-16 <table border="1"><tr><td>Fall 2015 FT</td><td>Spring 2016 FT</td><td>Summer 2016 FT</td></tr></table>	Fall 2015 FT	Spring 2016 FT	Summer 2016 FT	= 150%	
Fall 2015 FT	Spring 2016 FT	Summer 2016 FT			
2016-17 <table border="1"><tr><td>Fall 2016 FT</td><td>Spring 2017 FT</td><td>Summer 2017 FT</td></tr></table>	Fall 2016 FT	Spring 2017 FT	Summer 2017 FT	= 150%	
Fall 2016 FT	Spring 2017 FT	Summer 2017 FT			

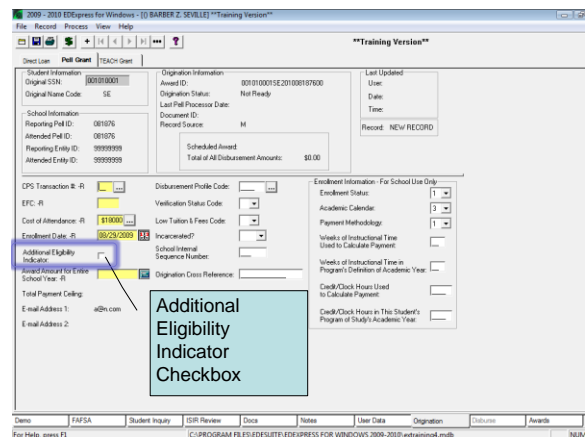
28

* First time received Pell

Year-Round Pell - Processing

- New field added to COD record
 - Additional Eligibility Indicator (AEI)
- School sets AEI to "true" on origination record when awarding any part of second scheduled award
- If you do not increase the award amount **AND** set the AEI to "true" on the *origination record*, the disbursement record will reject.
- AEI students will not trigger POP MRR
 - Still check for concurrent enrollment

29



Year-Round Pell

Award Detail Information	
Student Name	Your University
Award Information	
Award Amount Approved	\$5,350.00
Scheduled Award Amount	\$5,350.00
Award Amount Disbursed	\$2,675.00
CPS Transaction Number	01
Enrollment Date	09/08/2009
Cost of Attendance	\$26,928.00
EFC	0
Secondary EFC	
Pell CPS Highest Application Process Date	07/15/2009
Pell CPS Highest Transaction Number	1
Selected for Verification by CPS	No
Verification Status Code	
Incarcerated	
Additional Eligibility Indicator	No
Collection Status Indicator	
Collection Referral Amount	\$0.00
Collection Amount Collected	\$0.00
Eligibility Used	50.0000%
School Use Only	

Year-Round Pell - Processing

- COD will calculate a Life-time Eligibility Used percentage (LEU)
 - Only for students who are *first-time* Pell recipients in 2008-2009 or after
 - LEU percentage will be calculated based upon accepted Pell disbursements in COD.
 - Reflected in both COD and NSLDS beginning in July 2009
 - In the common record in 2010-2011
 - On student's ISIR in the 2010-2011

32

**Federal Register – 8/21/09
(NPRM)**

**Federal Register – 10/29/09
(Final)

Year-Round Pell Changes

Effective 7/1/2010

33

Year Round Pell – 2nd Scheduled Award

- To receive a **second** scheduled award, student must
 - **Be enrolled for credit or clock hours that are attributable to the student's second academic year in the award year**
 - Student in a *term-based* program would cease to be eligible for a payment from the 2nd Award if student ceased to be enrolled in the hours attributable to the 2nd Scheduled Award prior to the date for any enrollment recalculation required by school's recal. policies
 - Enroll in a TIV eligible program
 - Enroll at least as a half-time student

34

Year Round Pell – 2nd Scheduled Award

- May waive requirement to be **enrolled in hours attributable to the 2nd academic year**
 - Must be due to circumstances beyond the student's control
 - May include circumstances such as illness or classes not offered
 - Does not include withdrawing to avoid a grade or failing to register
 - Must be determined and documented on individual basis

35

Year Round Pell – 2nd Scheduled Award

- In determining eligibility for a second Scheduled Award in an award year, may NOT use hours based on the following to determine completion of hours in 1st academic year:
 - Advanced Placement (AP) programs
 - International Baccalaureate (IB) programs
 - Testing out, life experience, or similar competency measures

36

Year-Round Pell

Year Round Pell – Transfers

- Two Methods
 - Assumption Method
 - **Hours-Earned Method**

37

Year Round Pell: Transfers

- Assumption Method
 - Assume completed first academic year if received all of first Scheduled Award at prior institution
 - If less than first Scheduled Award, calculate hours considered to have completed:*

$$\frac{\text{Amount disbursed at prior institution} \times \text{Hours in current institution's academic year}}{\text{Amount of Scheduled Award at prior institution}} = \text{Hours considered completed}$$

*If attended more than one school, add the results for each prior school

Year Round Pell – Transfers

- Hours-Earned Method
 - Actual information from other schools
 - Time periods when hours earned
 - Does not include non-applicable hours (AP, IB, etc.)
 - Include hours in current award year for any hours earned in a payment period scheduled to occur in the prior year and the current award year (crossover)

39

Year Round Pell – Transfers

- If a school receives additional information on hours earned at other schools AFTER a PRIOR payment period in which the school disbursed a payment from the 2nd Scheduled Pell award, the school MAY recalculate disbursement for the PRIOR period

40

Year Round Pell: Crossovers

- **Regardless of Enrollment Status:**
 - MUST assign a crossover payment period to award year in which student receives greater payment at time payment is initially calculated*
 - MUST reassign if subsequent information to initial calculation shows greater payment would result
 - But not later than ED Pell processing deadline
 - MAY reassign if information received AFTER ED Pell processing deadline but BEFORE Pell Admin Relief deadline
- * 9/10 crossover exempt if school treats as part of 9/10 award year*

41

Year Round Pell: Payment from Two Scheduled Awards

- Payment for payment period is greater than balance of first Scheduled award.
- Payment is the remaining amount of the first Scheduled Award plus an amount from the second Scheduled Award for the balance of the payment.
- Payment from two awards may arise due to:
 - Acting on special circumstances
 - Completing the hours of the academic year but not receive all of first Scheduled Award

42